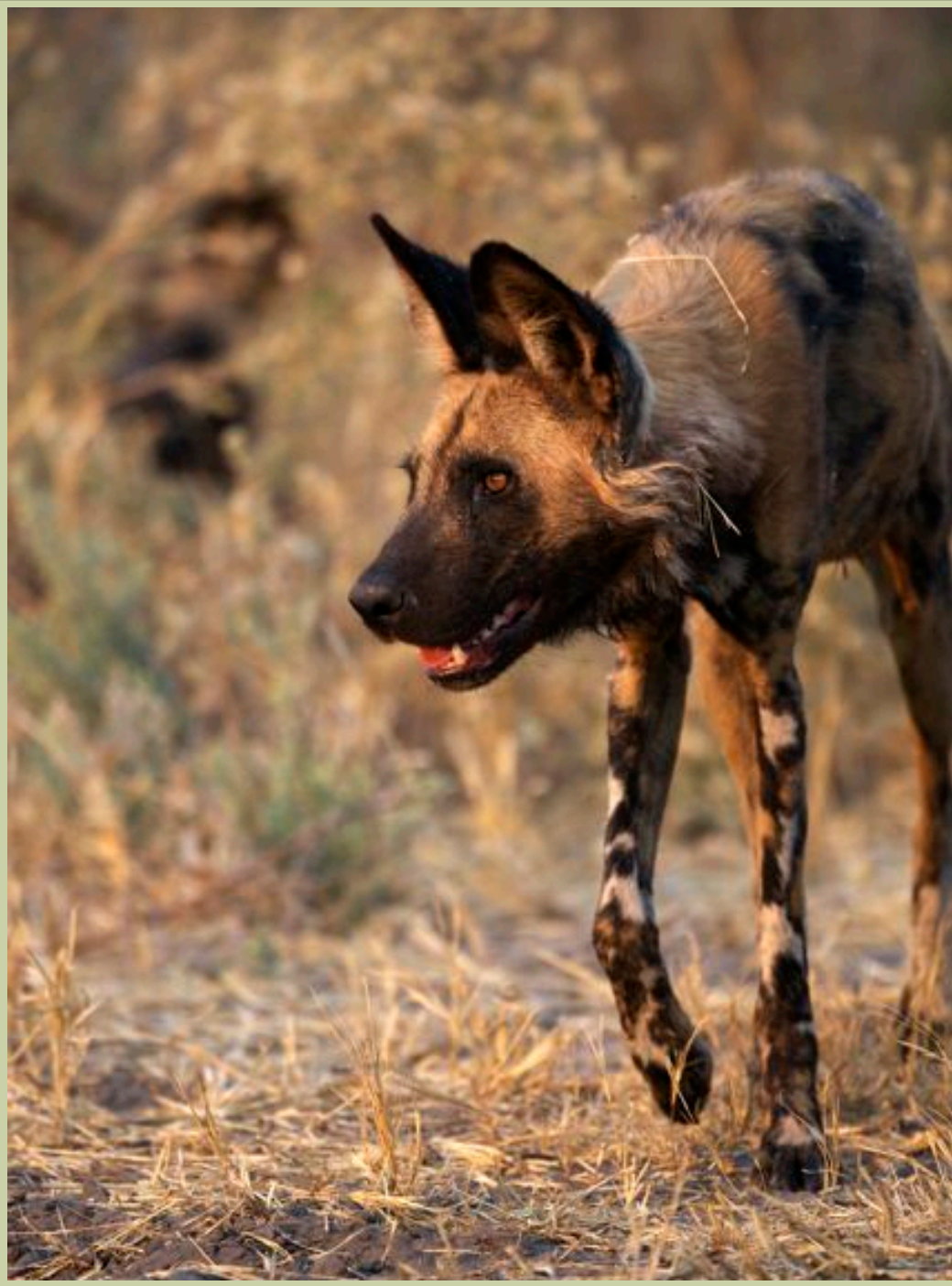


# *Mapula Lodge*

***“A true wilderness experience in the Okavango Delta ”***





## CONTENTS

Map & Introduction.....	3
Main Complex & Chalets .....	4
Combining Mapula Lodge with other Footsteps	
Camps & Lodges.....	5
Fast Facts.....	6

### **Contact Details**

T/+27 15 7930995

Hoedspruit, South Africa

[anthony@footsteps-in-africa.com](mailto:anthony@footsteps-in-africa.com) or [rihann@footsteps-in-africa.com](mailto:rihann@footsteps-in-africa.com)

[www.footsteps-in-africa.com](http://www.footsteps-in-africa.com)

### **USA Representation: Fazendin Portfolio**

T/ : +1.720.524.4403

Sarah Fazendin - [sarah@fazendinportfolio.com](mailto:sarah@fazendinportfolio.com)

Mallory Corbett - [mallory@fazendinportfolio.com](mailto:mallory@fazendinportfolio.com)

### **UK Representation: Marketing Worldwide**

T/+44 (0) 1883 349 889

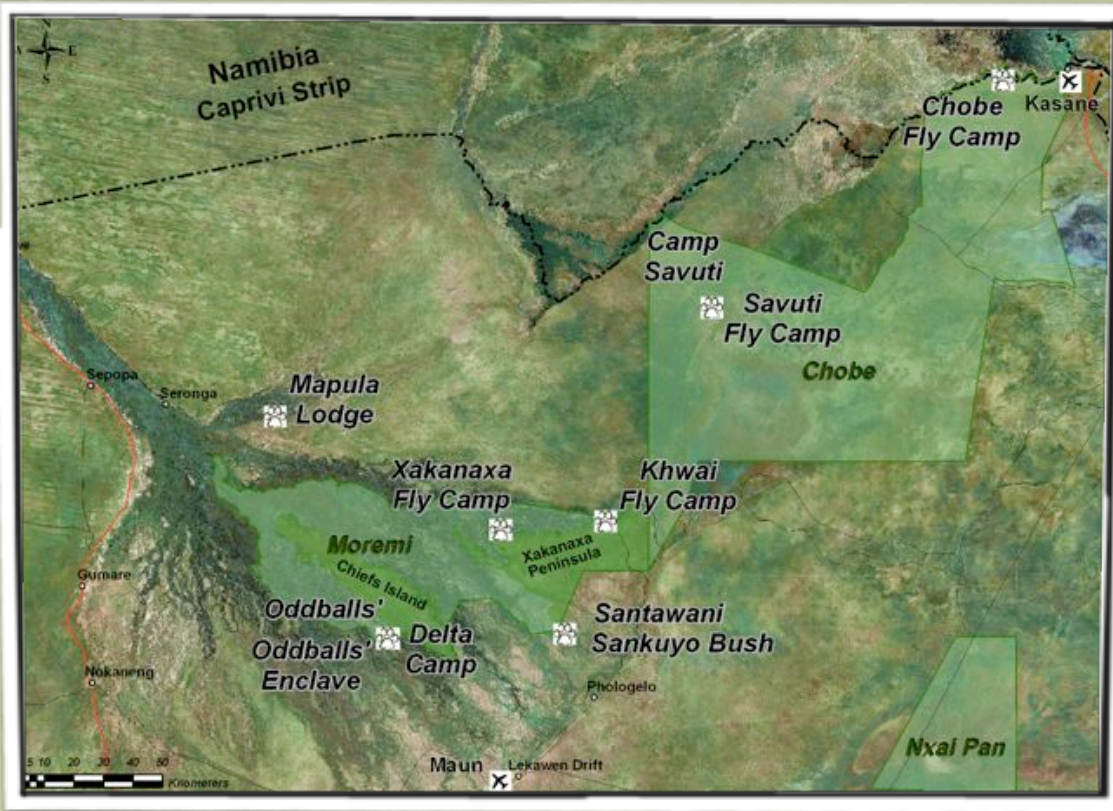
Helen - [helen@marketing-worldwide.co.uk](mailto:helen@marketing-worldwide.co.uk)

Sally - [sally@marketing-worldwide.co.uk](mailto:sally@marketing-worldwide.co.uk)

### **France Representation:**

T/ +33 688 843 5083

Christophe Courteau - [courteau.photo@free.fr](mailto:courteau.photo@free.fr)



## Footsteps in Africa - Mapula Lodge

Mapula Lodge is situated in the North Eastern area of the Okavango Delta, just outside the Moremi Game Reserve. This is a private area thus being able to offer a full spectrum of activities.

The main complex with its sweeping decks overlooks the permanent lagoon where the resident pod of hippopotamus resides. Here you will find the comfortable lounge, dining area and a bar area with one of the best views in the Okavango Delta. A

small library and swimming pool completes the main area.

Each of the 10 luxury chalets has a traditional design and use of natural log provide unique detail. The attention to detail and use of local craftsmanship in the construction of the Chalets is particularly impressive and attractive. The units all boast a small lounge and a full bathroom (with bathtub and outside shower).

The pack of wild dogs at Mapula Lodge has re-written our perception and understanding of wild dog behaviour.



FOOTSTEPS IN AFRICA - BOTSWANA MADE EASY & AFFORDABLE

## MAPULA LODGE

Game viewing is particularly good in this area, and the trees around the Lodge are home to a huge variety of birds.

Being in a permanent water area, Mapula Lodge can offer year round water activities, especially important during January - May when water levels in the Okavango can become too low in most area's to allow the use of the traditional mokoro.

Walking safaris with experienced guides and tracker, night drives in search of nocturnal animals. In the early morning and late

afternoons game drives are conducted in comfortable safari vehicles.

I think the following very recent comment made by a guest to Mapula Lodge – says it all!

“WOW WOW WOW WOW WOW Do I need to say more – We loved this place and the wonderful people.

This is definitely a place for people who are serious about their game viewing, the enthusiasm and the passion that is shown by the guides and the trackers is unbelievable.



**Main Complex - Exterior**



**Main Complex - View**



**Main Complex - Swimming pool**



**Main Complex - Interior**



## MAPULA LODGE

The African Wild Dogs have denned for two consecutive breeding seasons at Mapula Lodge. The pack of wild dogs at Mapula Lodge has re-written our perception and understanding of wild dog behaviour.

The game experience is enhanced through off- road operating – a key to delivering a quality look at the predators, that are widespread in our area.

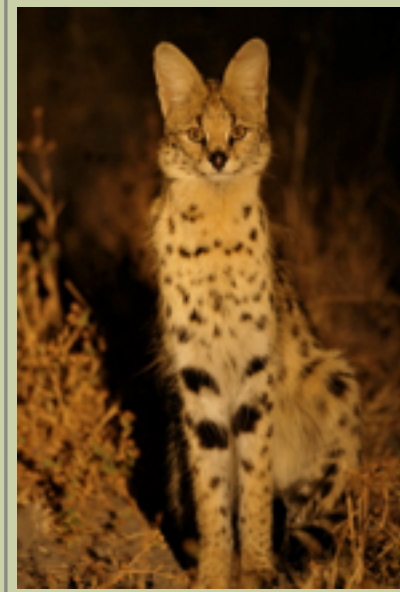
Mapula Lodge operates on our own exclusive private area.

You can combine any of our camps and lodges with Mapula Lodge, however some might combine better than others as they are “more” similar in terms of pricing and experience.

They are:

**Delta Camp** - Chief's Island Area - walking and mokoro.

**Deception Valley Lodge**- Northern side of Central Kalahari Game Reserve - game drives, guided walks, bushman activities



## Fast Facts

**LOCATION:** Situated in the northern area of the Okavango Delta, just outside the Moremi Game Reserve. This is a private area, giving the lodge the ability to offer a full spectrum of activities.

**THE FOCUS:** Mapula Lodge has become synonymous with providing a true wilderness offering.

A permanent lagoon is situated right in front of the main complex.

**ACCESS:** Serviced by Mapula Lodge Airstrip (Xarakai) - a 30-minute flight from Maun.

### CATEGORY OF SAFARI

**EXPERIENCE:** Land Camp and Water Camp with day and night drives with guide and tracker, bush walks and mokoro excursions.

**ACCOMMODATION:** We accommodate 20 guests in 10 chalets, each consisting of a bedroom and bathroom (bath,

shower, basin and WC) and large outside veranda, offering fantastic views over the lagoon.

### ACTIVITIES:

- Day Drives with guide and tracker
- Night Drives with guide and tracker.
- Walking
- Mokoro
- Private vehicle and guide (extra cost)
- Swimming pool at the main complex.
- Cultural Interaction at an authentic village.

**CHILDREN:** are most welcome, but for drives a private vehicle must be booked at an additional cost.

**RATES:** Rates are fully inclusive of local brand drinks and all activities.

**SOMETHING SPECIAL:** The African Wild Dogs have denned for two consecutive breeding seasons at Mapula Lodge.



**Chalet- Interior**



**Chalet - Bathroom**